

GLOUCESTER PLAYING PITCH STRATEGY

PART 5: ACTION PLAN

Introduction

The site-by-site action plan list seeks to address key issues identified in the accompanying Assessment Report. It provides recommendations based on current levels of usage, quality and future demand, as well as the potential of each site for enhancement.

It should be reviewed in the light of staff and financial resources in order to prioritise support for strategically significant provision and provision that other providers are less likely to make. Recommendation e below explains the hierarchy of priorities on the list. It is imperative that action plans for priority projects should be developed through the implementation of the strategy.

The Council should make it a high priority to work with NGBs and other partners to comprise a priority list of actions based on local priorities, NGB priorities and available funding.

Recommendation e - Adopt a tiered hierarchy of provision to help prioritise investment and improvement of sites

To allow for facility developments to be prioritised and programmed within a phased approach a tiered model to for the improvement of playing pitch sites and associated facilities is useful.

The identification of sites is based on their strategic importance in a City-wide context i.e. they accommodate the majority of demand or the recommended action has the greatest impact on addressing shortfalls identified either on a sport by sport basis or across the City as a whole.

Gloucester's tiered site criteria

Hub sites	Key centres	Local sites	Reserve sites
Strategically located. Priority sites for NGB.	Strategically located within the analysis area.	Serves the local community. Likely to include education sites.	Serves the local community.
Accommodates three or more good quality grass pitches. Including provision of at least one AGP.	Accommodates two or more good quality grass pitches.	Accommodates more than one pitch.	Likely to be single-pitch site.
Single or multi-sport provision. Could also operate as a central venue.	Single or multi-sport provision. Could also operate as a central venue.	Single or multi-sport provision.	Supports informal usage and/ or training etc.
Maintenance regime aligns with NGB guidelines.	Maintenance regime aligns with NGB guidelines.	Standard maintenance regime either by the club or in house maintenance contract.	Basic level of maintenance i.e. grass cutting and line marking as required.
Good quality ancillary facility on site, with sufficient changing rooms and car parking to serve the number of pitches.	Good quality ancillary facility on site, with sufficient changing rooms and car parking to serve the number of pitches.	Appropriate access changing to accommodate both senior and junior use concurrently (if required).	No requirement for access changing to accommodation.

GLOUCESTER

PLAYING PITCH STRATEGY

Hub sites are of City wide importance where users are willing to travel to access the range and high quality of facilities offered and are likely to be multi sport. These have been identified on the basis of high impact on addressing the issues identified in the assessment.

The financial, social and sporting benefits which can be achieved through development of strategic sites (also known as hub sites) are significant. Sport England provides further guidance on the development of community sports hubs at:

http://www.sportengland.org/facilities_planning/planning_tools_and_guidance/sports_hubs.aspx

For hub sites, NGB financial modelling suggests that multi 3G pitch sites are more sustainable in the longer term. However, the only existing site which is likely to be able to accommodate a double 3G pitch site is Plock Court/ University of Gloucester.

Key centres although these sites are more community focused, some are still likely to service a wider analysis area (or slightly wider). However, there may be more of a focus on a specific sport i.e. a dedicated site.

It is considered that some financial investment will be necessary to improve the ancillary facilities at both Hub sites and Key Centres to complement the pitches in terms of access, flexibility (i.e. single-sex changing if necessary), quality and that they meet the rules and regulations of local competitions.

Local sites refer to those sites which are generally one and two pitch sites and may be Council owned hired to clubs for a season or are sites which have been leased on a long-term basis. However, they are also likely to be private club sites serving one particular sport.

The level of priority attached to them for Council-generated investment may be relatively low and consideration should be given, on a site-by-site basis, to the feasibility of a club taking a long-term lease on the site (if not already present), in order that external funding can be sought.

It is possible that sites could be included in this tier which are not currently hired or leased to a club, but have the potential to be leased to a suitable club. NGBs would expect the facility to be transferred in an adequate condition that the club can maintain. In the longer term, the Club should be in a position to source external funding to improve/extend the facilities.

Reserve sites could be used as overspill for neighbouring sites and/or for summer matches/competitions, training or informal play. They are most likely to be single-pitch sites with no ancillary facilities.

Management and development

The following issues should be considered when undertaking sports related site development or enhancement:

- ◀ Financial viability.
- ◀ Security of tenure.
- ◀ Planning permission requirements and any foreseen difficulties in securing permission.
- ◀ Adequacy of existing finances to maintain existing sites.
- ◀ Business Plan/Masterplan – including financial package for creation of new provision where need has been identified.
- ◀ Analysis of the possibility of shared site management opportunities.

GLOUCESTER PLAYING PITCH STRATEGY

- ◀ The availability of opportunities to lease sites to external organisations.
- ◀ Options to assist community groups to gain funding to enhance existing provision.
- ◀ Negotiation with landowners to increase access to private strategic sites.
- ◀ Availability of funding for hub site development.
- ◀ Impact on all sports that use a site regardless of the sport that is the subject of enhancements.

Action plan

Partners

The column indicating Partners refers to the main organisation that the Council will liaise with in helping to deliver the actions. The next stage in the development of the action plan will be to agree a Lead Partner to help deliver the actions.

Priority level

In addition to determining where the site sits within the tiered hierarchy of provision, the level of priority should be determined. For example, a Hub Site is likely to have a high priority attached unless for example it is already established and therefore may have a low priority. A local private cricket or rugby club could have anything from high priority to low priority attached to it depending on a number of factors such as NGB priority and the impact the recommendation will have on addressing shortfalls/issues identified.

High priority sites have City wide importance and have been identified on the basis of the impact that the site will have on addressing the key issues identified in the assessment.

Medium priority and have analysis area importance and have been identified on the basis of the impact that the site will have on addressing the issues identified in the assessment.

Low priority sites have been identified on a site by site basis as issues appertaining to individual sites but that may also contribute to addressing the issues identified in the assessment.

Costs

The strategic actions have also been ranked as low, medium or high based on cost. The brackets in which these sit are:

(L) -Low - less than £50k; (M) -Medium - £50k-£250k; (H) -High £250k and above. These are based on Sport England's estimated facility costs which can be found at www.sportengland.org/media/198443/facility-costs-4q13.pdf

Timescales

The action plan has been created to be delivered over a ten year period. The information within the Assessment Report, Strategy and Action Plan will require updating as developments occur. The timescales relate to delivery times and are not priority based.

Timescales: (S) -Short (1-2 years); (M) - Medium (3-5 years); (L) - Long (6+ years).

Aim

Each action seeks to meet at least one of the three aims of the Strategy; **Enhance, Provide, Protect.**

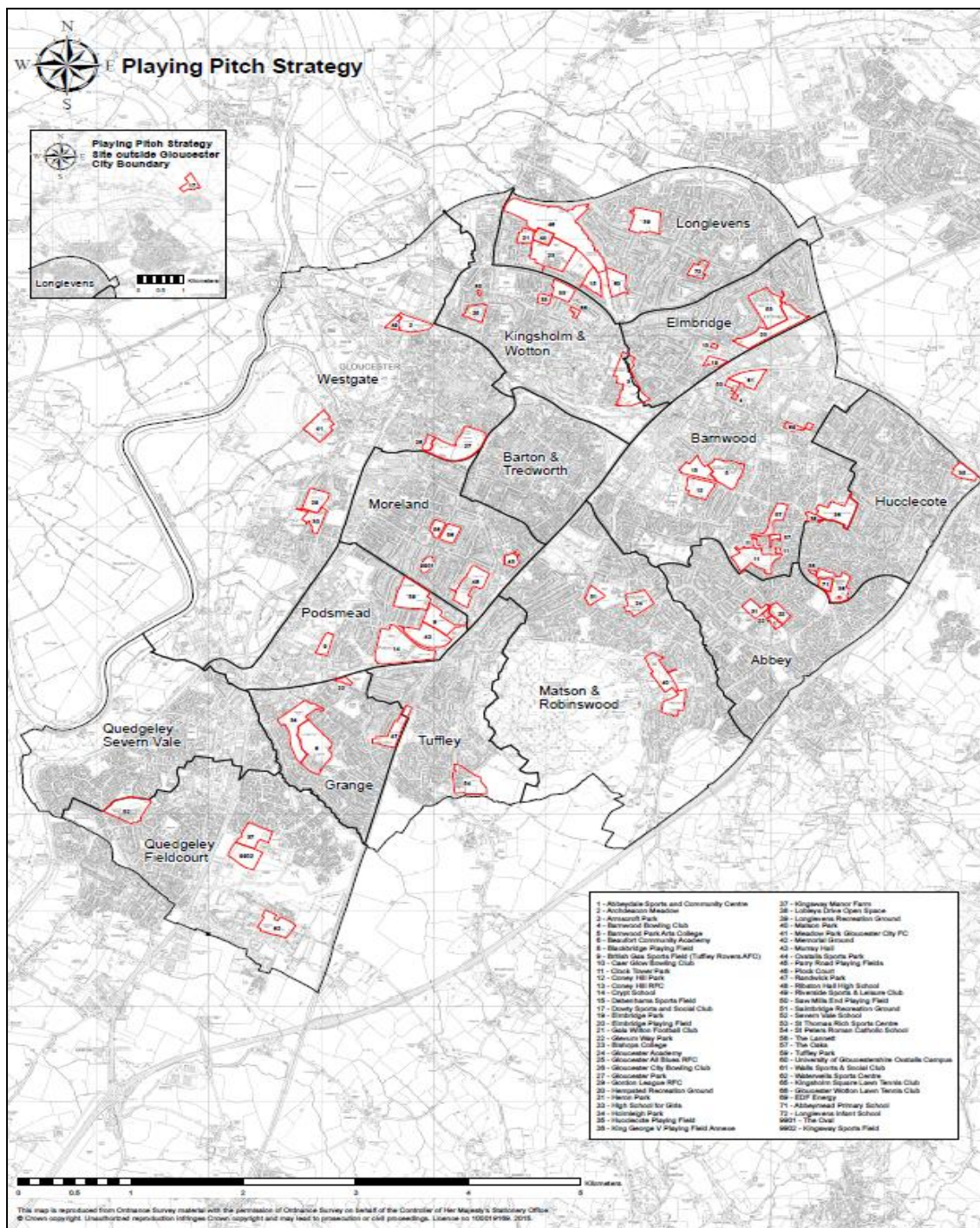
GLOUCESTER PLAYING PITCH STRATEGY

Site ID

Please note that although allocated Site ID numbers most often run in chronological order there are instances where numbers are missing. This is due to where pitches/sites are now no longer used or have been removed due to duplication.

Please also refer to Appendix Six for sport by sport maps of provision which are taken from the Assessment Report.

Figure 1: Site map



GLOUCESTER PLAYING PITCH STRATEGY

Site ID	Site	Sport	Management	Current status	Recommended actions	Partners	Hierarchy tier (priority)	Timescales ¹	Cost ²	Aim	September 2016 Update
1	Abbeydale Sports and Community Centre	AGP	Community	One standard quality small sized AGP used by all Abbeymead Rovers FC teams and Gloucestershire College for training.	Ensure sufficient access for club training whilst maximising usage at weekends and through commercial lets.	Club FA	Local (low)	L	-	Protect	No change.
2	Archdeacon Meadow	Cricket	School	Three standard quality squares with 10, eight and four wickets respectively. The King's School offsite sporting venue used solely for school sport and therefore unavailable for community use. Spare capacity of 80 matches.	Explore potential for future community use and ascertain current barriers to use. Continue to develop cricket within the school and maximise use through PE and school fixtures.	Council ECB	Local (low)	M	L	Protect Enhance	No change.
		Rugby union		Four standard quality pitches which are marked over the cricket outfield. Used heavily by the school for school matches on Saturday, midweek training and curricular PE. Site is subsequently overplayed by 1.5 match sessions per week.	In the short term look to transfer training use from match pitches in order to reduce the level of overplay. In the longer term seek to make improvements to maintenance in order to better pitch quality, both for use and to increase capacity available.	Council RFU		S-M	L-M		
3	Armscroft Park (Gloucester Old Boys RFC)	Rugby union	Sports Club	Two poor quality council pitches managed by AMEY and used by Gloucester Old Boys RFC. Spare capacity of one match sessions per week available at peak time.	Improve pitch quality and seek options to maximise use to accommodate future demand.	Council RFU	Local (medium)	M	M	Protect Enhance	No change.
4	Barnwood Bowling Club	Bowls	Sports Club	Good quality flat green which serves 82 members and is therefore overplayed. Club recently received funding to improve surrounding access areas.	Continue to sustain standard of maintenance in order to protect green quality. Consider use of additional suitable greens in order to alleviate some overuse.	Club	Local (low)	L	L	Protect Provide	No change.
5	Barnwood Park Arts College (Coney Hill RFC)	Football	School	One youth 11v11 and two 9v9 pitches, all assessed as poor quality and unavailable for community use. All are overplayed as a result of curriculum use and school fixtures.	Improve pitch quality through an increase in maintenance investment in order to increase capacity available and potential future community use.	Council FA	Key centre (medium)	M	L	Protect Enhance	No change. Discussions to be held with all education sites as part of forthcoming workshop / stakeholder group. The aim being to open up as educational facilities for community use where possible and to identify opportunities to improve the quality of pitches and associated facilities.
		Cricket		Good quality six wicket square cut and used by Arcadians Nine Elms CC. Outfield quality significantly poorer, very undulating and uneven. Sublet from Coney Hill RFC which rents from the school, also providing changing facilities. Capacity for a further seven matches per season.	Look to establish long-term security of tenure for the Club. Alternatively, investigate other potential sites which may offer greater security if required. Improve outfield quality and in the longer term consider adding additional wickets if demand increases.	Council ECB		S-M	M		
		Rugby union		One poor quality senior pitch used by Coney Hill RFC first team. Limited curricular use and school fixtures. Overplayed by 0.5 match sessions per week.	Improve pitch quality in order to increase capacity for school and community use.	Council RFU		M	M		
		Tennis		Six poor quality tarmac courts also overmarked for netball. Not available for community use and not floodlit.	Look to make improvements where possible, including re-lining.	Council LTA		L	L-M		

¹ Timescales: (S) -Short (1-2 years); (M) - Medium (3-5 years); (L) - Long (6+ years)

² (L) -Low - less than £50k; (M) -Medium - £50k-£250k; (H) -High £250k and above

GLOUCESTER PLAYING PITCH STRATEGY

6	Beaufort Community School	Football	School	Two adult and two youth 11v11 pitches, all assessed as poor quality. Community use by Tuffley Rovers FC adult and youth teams and Barton Rovers FC. All pitches are overplayed through a combination of school use and consistent club use.	Improve pitch quality through an increase in maintenance investment in order to address overplay and build future capacity for community and school use.	Council FA	Key centre (medium)	S-M	L	Protect Enhance	No change. Discussions to be held with all education sites as part of forthcoming workshop / stakeholder group. The aim being to open up as educational facilities for community use where possible and to identify opportunities to improve the quality of pitches and associated facilities.
		Cricket		One good quality non-turf wicket, unavailable for community use.	Explore options for future community use if demand in the Area increases. Consider potential use for informal or midweek cricket if required.	Council ECB		M-L	L		
		Rugby union		One rugby union pitch and two football pitches marked for rugby union until January. Available for community use but currently only used by school. All three pitches overplayed due to a significant amount of school use.	Improve pitch quality to increase capacity available and potential future community use.	Council RFU		M	M		
		Tennis		Three standard quality tarmac courts with floodlighting. Available to hire but currently unused.	Seek options to maximise use to accommodate future community demand for use by clubs or potential for creation of a satellite club.	Council LTA		M	L		
8	Blackbridge Playing Field	Football	County Council/ Council	One poor quality youth 9v9 pitch used by Tuffley Rovers FC. Spare capacity of 0.5 match sessions available at peak time. The site is part of community led proposals, supported by the City and County Councils, to form a sporting hub venue incorporating the existing running track.	Improve pitch quality and maximise use. Determine potential for the creation of a hub venue to serve the south of the City including options for 3G pitch provision and additional grass pitches. Potential site for FA Pitch Improvement Programme.	County Council FA RFU	Hub (medium)	M	H	Protect Provide Enhance	City Council priority site. Funding allocated to commission external support in preparing feasibility studies and community consultation looking at potential improvement / development as a sports hub, along with other adjacent sites.
9	British Gas Sports Field (Tuffley Rovers AFC)	Football	Sports Club	Standard quality adult pitch home to Tuffley Rovers FC. Less than three years tenure remaining on the lease from National Grid. Club recently received in excess of £43,000 from Sport England Protecting Playing Fields to help towards securing future tenure.	Support the Club in negotiations to secure long term tenure of the site, either through lease or by purchase of the land. Also help the Club in further development of the site and progression towards Step 5 football.	Club FA	Local (high)	S-M	M-H	Protect Enhance	Club has now purchased the sports ground and is no longer at risk. Football Stadium Improvement Fund grant towards new spectators area; jointly funded by the FA and the club.
10	Caer Glow Bowling Club	Bowls	Sports Club	Good quality flat green also used by Co-op BC. Club has in excess of 50 members and the green is likely to be overplayed taking into contention additional use from Co-op BC.	Continue to sustain standard of maintenance in order to protect green quality. Consider use of additional suitable greens in order to alleviate some overuse.	Club	Local (low)	M	L	Protect	No change.
11	Clock Tower Park	Football	Council	Standard quality adult pitch used by Abbeymead Rovers FC U13s teams. 0.5 match sessions available at peak time.	Seek to make improvements to maintenance in order to better pitch quality. Could accommodate usage from overplayed sites.	Council FA	Local (low)	M	L	Protect Enhance	No change.
		Tennis		Two poor quality tarmac courts without floodlighting. No recorded use beyond likely casual play. Metal nets render the site unsuitable for club use.	Look to make improvements to quality where possible, including resurfacing and re-lining. Ensure accessibility for social play and maximise use through community participation events where possible.	Council LTA		M	L		
12	Coney Hill Park	Football	Council	Poor quality adult pitch used by three single adult teams including some training. Changing facilities provided at Coney Hill RFC. Overplayed by 1.5 match sessions.	In the short term transfer training from match pitches in order to alleviate overplay. In the longer term improve pitch quality or	Council FA	Local/ Reserve (low)	S-M	L-M	Enhance	No change.

**GLOUCESTER
PLAYING PITCH STRATEGY**

					seek options to relocate pitch on another site and retain this site as strategic reserve.						
13	Coney Hill RFC	Rugby union	Sports Club	Two poor quality senior pitches, one used for both senior and junior matches and subsequently overplayed by 4.5 match sessions. The other pitch is unused other than to accommodate matches for infrequent club teams such as Vets and therefore has 0.5 match sessions available at peak time.	Seek to make improvements to maintenance in order to better pitch quality to help address overplay. Make greater use of the unused pitch onsite in order to distribute play. Seek options for floodlighting. Support the club in determining potential for asset transfer or negotiation of a longer term lease.	Club RFU Council County Council	Local (high)	S	L	Protect Enhance	No change.
14	Crypt School	Football	School	Three good quality pitches unavailable for community use, of adult, youth 11v11 and 9v9 sizes. Adult pitch overplayed by one match session and both youth pitches to capacity due to curricular use and school fixtures.	Retain for school use and ensure maintenance is sufficient enough to maintain quality.	Council FA	Local (medium)	L	L	Protect Enhance	No change. This site being considered as part of a wider package of opportunities along with Blackbridge sports ground. Discussions to be held with all education sites as part of forthcoming workshop / stakeholder group. The aim being to open up as educational facilities for community use where possible and to identify opportunities to improve the quality of pitches and associated facilities. Autumn renovation being undertaken by the Gloucestershire Cricket Board.
		Cricket		Good quality square with five wickets, used by four school teams and AIW CC midweek and at weekends. Overplayed by 25 matches per season. Poor pavilion and changing facilities.	Work to improve pavilion facilities to provide changing provision which adheres to league requirements. Consider additional wickets to address overplay.	Council ECB		M	H		
		Rugby union		Three poor quality senior pitches unavailable for community use to protect quality given substantial school use.	Improve pitch quality and seek options to establish community use in the future. Potential partnership could be established with local club.	Council RFU		M	M		
		Tennis		Two standard quality tarmac courts, unavailable for community use due to the lack of floodlighting.	Continue to develop tennis and maximise use by the school. If demand increases, seek options for floodlighting and establish community use.	Council LTA		L	M		
15	Debenham's Sports Field	Football	University	Site recently purchased by University of Gloucestershire, previously including one cricket square and overmarked adult football pitch. Disused and untended for last two years.	Continue to work with the University to establish best options for provision of pitches. Good quality cricket pitch to be re-provided to meet shortfalls in quality in the City. Provision of 3G pitch at Plock Court satisfies re-provision of grass football.	University FA ECB	-	S-M	H	Provide	Site subject to outline planning permission as part of the University's proposal to develop a business school and significantly enhanced sports offer at Oxstall's campus. Some playing field land has been lost but mitigated with reconfigured pitch provision qualitative improvements. Application supported by Sport England.
		Cricket									
17	Dowty Sport & Social Club	Football	Sports Club	Six good quality adult pitches used mostly by FC Lakeside amongst other teams. One mini 5v5 and one two 7v7 pitches all of good quality with no recorded play from Gloucester teams. All pitches show available match sessions however anecdotal evidence suggests they are played to capacity by additional clubs from neighbouring authorities.	Support use of the site for Gloucester based teams and residents given close proximity to the City.	Sports Club FA LTA	Key centre (medium)	L	L	Protect	Outside of the City Council's area. No change.
		Bowls		One good quality flat green which serves circa 51 members. Likely capacity for some additional play.							

**GLOUCESTER
PLAYING PITCH STRATEGY**

		Tennis		Two good quality courts without floodlighting used by Dowty TC.							
19	Elmbridge Park (Windfall Way Open Space)	Football	Council	One poor quality adult pitch played to capacity by Gloucester Elmleaze FC and Abbeymead Rovers youth.	Improve pitch quality or seek options to relocate pitch on another site and retain this site as strategic reserve.	Council FA	Local/ Reserve (low)	S-M	L-M	Enhance	GCC funded improvements to football pitch including verti draining, application of selective herbicide, overseeding, fertilising and top dressing with pitch drag matting and brushing.
20	Sandyleaze Open Space (Elmbridge Playing Field) (Old Richians RFC)	Football	Sports Club	Poor quality adult pitch played to capacity by Old Richians FC.	Improve pitch quality through an increase in maintenance investment in order to build strategic reserve/future capacity.	Club FA	Key centre (medium)	M	L	Protect Enhance	No change.
		Rugby union		Two poor quality senior pitches used by Old Richians RFC for senior and junior matches and weekend training. Overplayed by 3.25 match sessions given added use by Sir Thomas Rich's School for Saturday morning fixtures. One mini pitch with spare capacity as much mini play takes place on the neighbouring school pitches.	Make improvements to maintenance in order to better pitch quality, both for use and to increase capacity available. In the short term look to transfer training use from match pitches in order to reduce the level of overplay. Consider the mini pitch to be converted into a floodlit training area.	Club RFU		S-M	L-M		
21	Gala Wilton Football Club	Football	Sports Club	One poor quality adult pitch overplayed by 0.5 match sessions. Lease on the site has expired and the Club hopes to negotiate a long term lease with the Council for both the pitch and clubhouse building. The Club has desires to install floodlighting in order to meet Step 6 criteria and has planning permission to do so.	Although the grant can only be applied for when promotion is gained, support the Club in negotiating a long term lease on the site so that it may in the future apply for grant funding for floodlighting. Seek to improve pitch quality through greater maintenance to eliminate overplay.	Council Club FA	Local (medium)	S	M	Protect Enhance	Visit undertaken by FA Pitch Improvement Advisor (PIA) and a request has been made by the club for more information on the cost of purchasing new equipment. Follow up visit from FA PIA scheduled for October 2016. Tenure arrangements being discussed with the City Council.
22	Glevum Way Park	Football	Council	One standard quality adult pitch with one match session available at peak time. One mini 7v7 pitch with no spare capacity at peak time and two mini 5v5 pitches which are currently unused. Site used by Abbeymead Rovers FC junior and girls sections.	Improve pitch quality and seek to make greater use of available capacity and unused pitches to address current shortfalls – potential to convert to youth/adult pitch.	Council FA	Local (medium)	S	L-M	Protect Provide	No change.
23	Bishop's College (Old Centralians RFC)	Football	County Council Aspire	Two good quality pitches used by teams playing both Saturday and Sunday. 0.5 match sessions available at peak time.	Multi NGB approach to be taken regarding intentions for potential future development of the site, including impacts on the adjacent Plock Court which operates synergistically alongside Bishop's College, as well as the associated development of Debenhams Sports Field. Ensure no loss of provision for any resident sport and agree upon optimal pitch configuration should development go ahead.	Aspire University Council FA ECB RFU RFL	Key centre (medium)	S-M	M-H	Protect Enhance	Outline planning permission now granted for the demolition and redevelopment of the school for housing. A small amount of existing playing field land will be lost to development but the existing two grass pitches will be retained but in a reoriented position. Outside of the planning application, some of the existing playing field land has been transferred to the City Council to facilitate the University of Gloucestershire's proposed business school and significantly
		Cricket		One non-turf wicket of poor quality and not suitable for use.							
		Rugby union Rugby league		Two poor quality senior pitches, one of which is floodlit and also used throughout the summer by Gloucestershire Warriors RLFC. Used by Old Centralians RFC for matches and by other clubs for floodlit training. Intended location for proposed 3G developments.							

**GLOUCESTER
PLAYING PITCH STRATEGY**

											enhanced sporting offer.
24	Gloucester Academy (Old Centralians RFC)	Football	School	Standard quality adult pitch used by the school and a number of community adult teams. Overplayed by 1.5 match sessions taking into account all use.	Seek to make improvements to maintenance in order to better pitch quality, both for use and to reduce level of overplay. Site for FA Pitch Improvement Programme.	Council FA	Key centre (high)	S	L	Protect Enhance Provide	No change. Discussions to be held with all education sites as part of forthcoming workshop / stakeholder group. The aim being to open up as educational facilities for community use where possible and to identify opportunities to improve the quality of pitches and associated facilities.
		Cricket		Standard quality square with five wickets, as well as one non-turf wicket. Outfield area is too small and therefore not suitable for senior cricket. Currently only used by junior school teams.	Continue to develop cricket at the school and link with local clubs. Determine the potential for community use by junior club teams where suitable and if demand exists in the future.	Council ECB		L	L		
		Rugby union		One poor quality senior pitch used by both the school and by Old Centralians RFC. The Club plays in the national leagues and is frustrated that the pitch is usually in unplayable condition from November and February. Club and school are keen to convert the pitch to a World Reg 22 AGP.	Investigate potential for installation of a functioning drainage system. Coupled with that improve maintenance, particularly to enable greater drainage of water. Explore longer term aspirations of a World Rugby compliant 3G AGP should there be no other viable drainage solution.	Council Club RFU		S	M		
		Tennis		Three poor quality tarmac courts with floodlighting though unavailable for community use.	Look to make improvements to quality where possible, including resurfacing/re-lining and investigate potential future demand for community use.	Council LTA		L	M		
25	Gloucester All Blues RFC (Alney Island)	Rugby union	Sports Club	Council owned site with no long term lease. Two poor quality senior pitches which for several years were unusable due to flooding from the nearby river. Training on pitches using mobile floodlights. Club to return to play here for 2015/16 season though pitches are overplayed by 1.5 match sessions. Unused mini pitch also marked as the Club tries to begin a junior section.	Support the Club in starting and developing a junior section and further growth. Seek to make improvements to maintenance in order to better pitch quality, both for use and to reduce level of overplay. Look to transfer training use from match pitches to alleviate overplay and upgrade floodlighting as appropriate.	Club RFU Council	Local (medium)	M	M-H	Protect Enhance	No change.
26	Gloucester City Bowling Club	Bowls	Sports Club	Two good quality flat greens, one of which is an artificial surface shared with Gloucester Spa BC which is also onsite. Clubhouse is also shared between the two clubs.	Continue to sustain standard of maintenance in order to protect green quality. Maintain inter-club relationship to ensure the site remains a high activity area for bowls.	Clubs	Local (medium)	L	L	Protect	No change.
27	Gloucester Park	Football	Sports Club	Good quality adult pitch marked onto the cricket outfield, used by Tredworth Tigers FC adult team. Spare capacity of 2.5 match sessions, of which 0.5 are available at peak time.	Uphold standards of maintenance to ensure pitch quality remains good, whilst managing use between football and cricket seasons to avoid fixture clashes.	Club FA	Key centre (low)	L	L	Protect	Cricket club recently lost their groundsman – GCB to monitor pitch quality.
		Cricket		Standard quality square with 10 wickets, played to capacity by Gloucester City Winget CC, therefore no capacity for additional play. Lack of car parking provision.	Sustain and further improve quality of maintenance in order to ensure square quality is able to sustain play up to capacity. In the longer term, seek to resolve issues regarding lack of parking space and access to off road parking onsite.	Club ECB		M	M		
		Bowls		Good quality flat green used by Gloucester Spa BC. Clubhouse is also shared between the two clubs.	Continue to sustain standard of maintenance in order to protect green quality. Maintain inter-club relationship to ensure the site remains a high activity area for bowls.	Clubs		L	L		

GLOUCESTER PLAYING PITCH STRATEGY

29	Gordon League RFC	Rugby union	Sports Club	Two poor quality senior pitches used by senior club teams and Gloucestershire College for matches. One match session available at senior peak time. One further poor quality senior pitch with floodlighting used for all training, overplayed by 2.5 match sessions per week.	Address pitch quality and surface issues including suspected broken drain underneath Pitch Two. Work to improve quality of maintenance in order to better pitch quality, both for use and to increase capacity available to accommodate the establishment and growth of planned junior section.	Club RFU	Local (high)	S-M	M	Protect Enhance	RFU funded aeration of grass pitches to improve quality. Club identified as a priority by the RFU given high and increasing levels of participation.
30	Hempsted Recreation Ground	Football	Council	Poor quality adult pitch used by Trinity & Quedgeley United FC. Spare capacity of 0.5 match sessions available at peak time.	Improve pitch quality through an increase in maintenance investment and seek to make greater use of available capacity and unused pitches to address current shortfalls – potential to convert to youth pitch.	Council FA	Local (low)	M	L	Protect Enhance	GCC funded new football posts for 11 aside pitch.
31	Heron Park	Football	Council	Poor quality adult pitch used by Abbeymead Rovers FC mens, womens and youth 11v11 teams. Overplayed by 2.5 match sessions.	In the shorter term transfer play to sites with spare capacity and in the longer term improve quality through an increase in maintenance investment in order to address overplay.	Council FA	Local (medium)	S	L	Protect Enhance	No change.
33	High School For Girls (Spartans RFC)	Rugby union	School	One poor quality senior pitch used little by the school other than for athletics in summer. Community use by Spartans RFC senior and junior sections for matches and training. Overplayed by one match session per week.	Explore options to create a floodlit training area in order to accommodate training and reduce overplay on the match pitch.	Council RFU	Local (medium)	M	M	Protect Enhance	No change. Discussions to be held with all education sites as part of forthcoming workshop / stakeholder group. The aim being to open up as educational facilities for community use where possible and to identify opportunities to improve the quality of pitches and associated facilities.
		Tennis		Six standard quality tarmac courts currently only used by the school. Plans for the installation of a key fob entry system to increase community use in conjunction with Oxstalls Sports Park. Recently been awarded LTA funding to help install.	Work to increase community use and establish the site with a focus on social and unorganised tennis in the area.	Council Aspire LTA		M	L		
34	Holmleigh Park	Football	Council	Two poor quality adult pitches currently unused and therefore have two match sessions available at peak time. One poor quality youth 9v9 pitch used by Tuffley Rovers FC and overplayed by 0.5 match sessions per week.	Improve pitch quality through an increase in maintenance investment and maximise use to help address shortfalls.	Council FA	Local (medium)	S	L	Protect Enhance Provide	No change.
35	Hucclecote Playing Field (Hucclecote RFC)	Cricket	Sports Club	Poor quality square with eight wickets, with the outfield overlapping the rugby union pitch. Used by Gloucester Harequins CC which sub-lets from the rugby club and has no subsequent confirmed security of tenure. Spare capacity for an additional 26 matches per season.	Work to establish security of tenure for the cricket club beyond the next three years. Seek to improve square quality through better maintenance and sufficient access to equipment and specialist knowledge.	ECB Council	Key centre (high)	S	L-M	Protect Enhance	RFU funded aeration of grass pitches to improve quality. Club identified as a priority by the RFU given high and increasing levels of participation.
		Rugby union		One poor quality senior pitch and three poor quality mini pitches used by Hucclecote RFC. Senior pitch is overplayed by 0.5 sessions per week due to senior and junior matches, whilst mini pitches have 2.25 matches capacity, none of which are available at peak time.	Seek to make improvements to maintenance in order to better pitch quality, both for use and to increase capacity available.	RFU Council		S	L-M		

**GLOUCESTER
PLAYING PITCH STRATEGY**

36	King George V Playing Fields (Hucclecote RFC)	Football	Council	Four poor quality mini 7v7 pitches, also used for both 5v5 and youth 9v9 matches but Hucclecote YFC junior section. No spare capacity available at peak time.	Seek additional pitch capacity in order to reduce current use of overmarked pitches. Work towards improving maintenance in order to better pitch quality, both for use and to increase future capacity available. Potential site for FA Pitch Improvement Programme.	Council FA	Key centre (medium)	M	M	Protect Enhance	No change.
		Cricket		Standard quality ten wicket square used as a secondary location by Ullenwood Bharat CC to accommodate imported demand from its third and fourth senior teams. Spare capacity for an additional 31 matches per year.	Determine intentions for continued use of the site by imported teams given the new ground developments the Club is undertaking outside of Gloucester. Improve quality and seek to maximise use of spare capacity for future demand.	Council ECB		S-M	M		
		Rugby union		One poor quality senior pitch used by Hucclecote RFC mini and junior teams as a secondary venue for matches and training most weeks. Subsequently overplayed by one match session per week. Club would like to relocate all use back to the main club site.	Support movement of play onto new junior pitch which will run adjacent to Hucclecote Playing Field, whilst retaining use of this site to accommodate play as required. Seek to make improvements to maintenance in order to better pitch quality, both for use and to increase capacity available.	Council RFU		S	L		
37	Kingsway Manor Farm	Football	Council	One poor quality adult pitch currently unused and therefore available at peak time.	Improve quality and maximise use. Alternatively if low value site re provide pitches/investment in capacity at a hub site and retain as a reserve site.	Council FA	Local/ Reserve (low)	M	M	Enhance Provide	No change.
38	Lobleys Drive Open Space	Football	Council	Two mini 7v7 pitches and one youth 9v9 pitch all of poor quality, used by Abbeymead Rovers FC junior section. No capacity available for additional 7v7 play, whilst the 9v9 pitch is overplayed by 0.5 match sessions per week.	Improve pitch quality through an increase in maintenance investment, both for use and to reduce level of overplay and build future capacity.	Council FA	Local (medium)	M	L	Protect Enhance	No change.
39	Longlevens Recreation Ground (Longlevens RFC & Dowty RFC)	Football	Council/ Sports Club	Two poor quality adult pitches used mainly by Longlevens FC adult and youth 11v11 teams. Overplayed by 1.5 match sessions. Unmet demand for 0.5 adult match sessions. One poor quality youth 9v9 pitch played to capacity, also used in part for rugby union training.	Improve quality through an increase in maintenance investment in order to better pitch quality for use, to reduce level of overplay and to accommodate unmet demand. Site for FA Pitch Improvement Programme.	Council Club FA	Key centre (high)	S	L	Protect Enhance Provide	GCC funded pitch improvement works to two rugby pitches, rugby training area and two football pitches including verti draining three pitches and training area used by Longlevens RFC. Overseed training area and apply selective weed killer to all four pitches. RFC funded aeration to improve grass pitch quality.
		Rugby union	Council/ Sports Club	Two poor quality senior pitches used for matches by Longlevens RFC senior and junior teams. Also used by Dowty RFC. Overplayed by three match sessions per week.	Improve pitch quality/maintenance in order to address overplay. Explore options for access to dedicated floodlit training area to alleviate use of match pitches.	Council Club RFU		S	M		
40	Matson Park (Matson RFC)	Rugby union	Sports Club	Two poor quality senior pitches used by Matson RFC senior and junior sections for both matches and training. Overplayed by five match sessions.	Improve quality and transfer training use from match pitches in order to address overplay.	Council RFU Club	Local (medium)	M	M	Protect Enhance	No change.
41	Meadow Park (Gloucester City FC)	Football	Sports Club	Step 2 ground which has been unusable since being flooded in 2007. Gloucester City FC currently displaced to Cheltenham and remains keen to work towards a solution to return to the City in the future.	Support the Club in applications for grant funding which would allow development of a site to allow it to return to Gloucester.	FA Club	Key centre (high)	M-L	H	Provide Enhance	Planning permission now granted for the development of a new football stadium for Gloucester City FC. It is hoped the club will play at the redeveloped ground for the 2017/18 season.

GLOUCESTER PLAYING PITCH STRATEGY

											Club currently applying to the Football Foundation FSIF funding to bring forward the redevelopment of the club.
42	Memorial Ground (Old Cryptians RFC & Widden Old Boys RFC)	Rugby union	Sports Club	Four poor quality pitches, two of which are used by Old Cryptians RFC and two by Widden Old Boys RFC, each with separate lease agreements. All four pitches are overplayed, particularly the fully and partially floodlit pitches which are overplayed by three and six match sessions respectively, largely due to training use in excess of match play.	Transfer training use from match pitches and improve quality/maintenance in order to address overplay and build future capacity. Look at options to upgrade floodlit where possible. Support Widden Old Boys RFC in plans to improve ancillary facilities and repair the existing roof.	RFU Sports Club	Local (high)	S-M	M	Protect Enhance	Club funded reseeding of parts of the grass pitches.
43	Murray Hall	Football	Council	Mini 7v7 pitch assessed as poor quality. Currently unused and therefore is available at peak time.	Improve quality through an increase in maintenance investment and maximise usage to address shortfalls by establishing a resident club.	Council FA	Local (low)	M	L	Protect Enhance	No change.
44	Oxstalls Sports Park	AGP	Council Aspire	One standard sand dressed pitch with floodlights, resurfaced in 2012. Used intensively by Gloucester City HC for matches and training as well by Cleevillians HC. Much competition with football training demand.	Priority hockey site and should have long term protection of this AGP for hockey. Seek to increase capacity available for midweek hockey training whilst working closely with Gloucester University re proposed 3G developments to ascertain potential effects and transfer of midweek football demand from this pitch. Ensure sinking fund is in place for further future re carpeting.	Council Aspire EH FA University	Key centre (high)	M	L	Protect Enhance	No change – although improvements are being made to the wider site as part of the University of Gloucestershire's outline planning permission for a business school and significantly improved sporting offer.
		Tennis		Four good quality clay courts with floodlighting. Key tennis focus site within the City, also providing indoor provision. Also used by Gloucester College students.	Continue to maintain court quality and provide outdoor provision onsite, maximising use of floodlights alongside indoor facilities throughout the autumn and winter seasons. Link in with wider plans for outdoor provision at school satellite venues.	Aspire Council LTA		L	L		
45	Parry Road Playing Fields	Football	Council	Standard quality adult pitch, currently unused and therefore available at peak time. To be re-marked for 2015/16 season as two youth football pitches for new club Heart of Gloucester FC consisting of one 7v7 and one 5v5 pitch.	Support further club growth as appropriate. Improve quality/maintenance and support establishment and development of the new resident club.	Council FA	Local (medium)	S	L	Protect Enhance Provide	As of the start of the 2016/17 season Heart of Gloucester FC has moved to Finlay Road School playing field. Parry Road Playing Fields are currently therefore unused.
46	Plock Court	Football	Council Aspire	Four poor quality adult pitches primarily used by teams from the Gloucester & District Sunday Football League. 0.5 match sessions available at peak time. Also one unused youth 9v9 pitch available at peak time. Changing provision is insufficient and is restricting the growth of the league.	Improve pitch quality and maximise usage of all pitches. Consider reconfiguration of adult pitches to address mini/youth shortfalls. Linked to maximising use, explore options for funding to improve/increase the size/availability of changing facilities in order to maximise pitches available to Sunday league teams and help facilitate growth. Site for FA Pitch Improvement Programme.	Aspire Council FA University	Hub (high)	S-M	H	Protect Enhance Provide	Significant improvements are to be implemented to Plock Court as part of the University of Gloucestershire's wider planning application to include a business school and significantly enhanced sports offer. Reserved matters planning applications currently being assessed along with a funding application. In addition, the City Council has funded the replacement of four
		Cricket		Standard quality square with 10 wickets, currently unused in the absence of demand. Marked and maintained as a	Improve quality and maximise use. Establish a club currently playing elsewhere with no security of tenure to	Aspire Council ECB		S-M	M		

**GLOUCESTER
PLAYING PITCH STRATEGY**

				reserve facility. Previously had six squares which are able to be reinstated should demand for cricket increase.	use this site should there be an increase in quality, particularly the provision of suitable ancillary and changing facilities. Potential investment from loss of cricket at Debenhams Sports Field could help to facilitate this.	University					sets of football posts for the four current football pitches.
		Rugby union		No pitches currently marked but the site previously had one junior pitch which is able to be marked again should there be future demand.	Explore potential demand amongst clubs in the area and determine whether reinstating this pitch could address shortfalls at club sites in the locality.	Aspire Council RFU		S-M	L-M		
47	Randwick Park	Football	Council	Poor quality adult pitch currently unused, therefore available at peak time. Standard quality mini 7v7 pitch used by Tuffley Rovers FC with no spare capacity available at peak time.	Improve pitch quality through an increase in maintenance investment and maximise use.	Council FA	Local (low)	M	L	Protect Enhance	The City Council has now implemented 2 x 9 v 9 pitches on Randwick Park and the 11 a-side pitch has been removed. Used by Tuffley Rovers FC.
		Tennis		One poor quality tarmac court without floodlighting. No recorded club use though it is likely that the court is used occasionally for social and non-organised tennis.	Seek to improve court quality and ensure access for continued irregular use by local residents.	Council LTA		L	L-M		
48	Ribston Hall High School	Football	School	Two poor quality adult pitches used by Tredworth Tigers FC U13s. Overplayed by 1.5 match sessions when taking into consideration weekly school use.	Seek to make improvements to maintenance in order to better pitch quality, both for use and to increase capacity available.	Council FA	Local (low)	M	L	Protect Enhance	No change. Discussions to be held with all education sites as part of forthcoming workshop / stakeholder group. The aim being to open up as educational facilities for community use where possible and to identify opportunities to improve the quality of pitches and associated facilities.
		AGP		Small sized sand dressed AGP mainly used by all girls school for hockey practice but lacking floodlights. Also marked as four tennis courts for use in the summer.	Determine scope for installing floodlighting and whether the site has further potential to be used to accommodate football and hockey training demand in the evenings.	Council FA EH		M	L-M		
		Tennis		Three tarmac courts of standard quality without floodlighting, currently unused other than by the school.	Continue to develop school tennis and try to make improvements to court quality where possible.	Council LTA		L	L		
49	Riverside Sports & Leisure Club	Tennis	Commercial	Four good quality tarmac courts with floodlighting. Used by Riverside TC which has two teams.	Continue to provide good quality floodlit facilities for club members and ensure access to sufficient court time for matches and coaching.	Sports Club LTA	Local (low)	L	L	Protect Enhance	No change.
50	Saw Mills End Playing Field	Football	Sports Club	Standard quality adult pitch used by Longlevens FC 1 st and Ladies teams. Spare capacity of 0.5 match sessions available at peak time. Site currently meets required Step 6 standard but floodlighting does not comply with Step 5 specifications, limiting the team progressing to the next tier of the pyramid structure.	Support the Club in development of facilities to the required Step 5 standard, particularly floodlighting, enabling the Club to achieve promotion in practice.	Club FA	Local (medium)	M	L-M	Protect Enhance	FA / Longlevens FC funded and implemented grass pitch improvement works. Funding awarded from the Football Foundation 'Football Stadia Improvement Fund' towards improving floodlights. Recent visit from an FA Pitch Improvement Officer (PIA) with a follow up scheduled for later in the year.
51	Saintbridge Recreation Ground	Rugby union	Council	Poor quality senior pitch currently not cut or lined ready for play due to a lack of demand.	Explore potential demand amongst clubs in the area and determine whether reinstating this pitch could address shortfalls at club sites in the locality. Quality would need to be improved if demand exists.	Council RFU	Local (medium)	S	M	Provide	Old, poor quality rugby posts now removed by the City Council. Old Centralians RFC potentially interested in using the pitch for 2 nd and 3 rd teams but at the time of writing not confirmed.

**GLOUCESTER
PLAYING PITCH STRATEGY**

52	Severn Vale School	Football	School	One adult pitch and one youth 11v11 pitch, both of poor quality and unavailable for community use due to school concerns regarding security and access to the rear of the building. Each pitch overplayed by two match sessions when taking into consideration weekly school use.	Work with the school to address concerns regarding community use and potential to make pitch accessible for future use. Seek to improve pitch quality through increased level and standard of maintenance. Site for FA Pitch Improvement Programme.	Council FA	Key centre (high)	S	L-M	Protect Enhance Provide	No change. Discussions to be held with all education facilities as part of forthcoming workshop / stakeholder group. The aim being to open up as educational facilities for community use where possible and to identify opportunities to improve the quality of pitches and associated facilities. FA has received expression of interest to purchase new for under 12s age group. GFA to make contact with the school.
		Cricket		One good quality non-turf wicket, used only by the school and not made available for community use.	Work with the school to address concerns regarding community use and potential to make pitch accessible for future use.	Council ECB		L	L		
		Rugby union		Poor quality senior pitch unavailable for community use due to school concerns regarding security and access to the rear of the building.	Work with the school to address concerns regarding community use and potential to make pitch accessible for future use.	Council RFU		S	L-M		
		AGP		Standard quality sand filled surface well in excess of 10 years old and requiring replacement. No hockey use and instead used significantly for football by both school and community clubs.	Improve pitch quality. England Hockey to identify priority for this AGP to be retained as sand for hockey use. If to be retained as sand surface ensure hockey can be accommodated as a priority. Decision to be reached by FA and EH in the context of Citywide Strategy for 3G pitches.	Council FA EH		M	H		
		Tennis		Six poor quality tarmac courts used infrequently for pay and play beyond school use. Managed by Quedgeley Community Trust.	Continue to work with Oxstalls Sports Park towards plans for key fob entry system and to increase court usage through creation of a satellite club onsite.	Council Trust Aspire LTA		L	L		
53	Sir Thomas Rich's Sports Centre (Old Richians RFC)	Football	School	One standard quality adult football pitch which overlaps the cricket outfield, not made available for community use. Two further adult pitches are used dually for both football and rugby union. All three pitches are at capacity when considering weekly school use and fixtures.	Retain for school use. Manage dual use pitches carefully so not to negatively impact on pitch quality.	Council FA	Key centre (medium)	L	L	Protect Enhance	No change. Discussions to be held with all education facilities as part of forthcoming workshop / stakeholder group. The aim being to open up as educational facilities for community use where possible and to identify opportunities to improve the quality of pitches and associated facilities.
		Cricket		Good quality five wicket square used by school teams and played to capacity. Previously had community use but now unavailable due to issues regarding proximity of changing and pavilion facilities to the playing area as per league regulations.	Explore potential future use given good quality pitch.	Council ECB		S-M	M		
		Rugby union		Four poor quality senior pitches, two of which are also used for football. Heavily used by 17 school teams for training and matches. Two far pitches are also used by Old Richians RFC junior section and are overplayed by eight match sessions, whilst the two remaining pitches are overplayed by six match sessions.	Look to transfer training use from match pitches in order to reduce the level of overplay. Seek to make improvements to maintenance in order to better pitch quality, both for use and to increase capacity available.	Council RFU		S-M	M		
		Bowls		One good quality green used by Sir Thomas Rich's BC. Likely that capacity is available for further use.	Continue to ensure required standard of maintenance and continued green quality.	Club		L	L		

**GLOUCESTER
PLAYING PITCH STRATEGY**

		Tennis		Seven poor quality tarmac courts overmarked for netball use. School would like resurface due to poor quality. No current community use.	Determine potential to resurface courts and make available for community use. Support the school in search of funding opportunities if required.	Council LTA		M	M		
54	St Peters Roman Catholic High School	Football	School	Poor quality youth 9v9 pitch not made available for community use in order to protect surface quality for school use. Overplayed by two match sessions when considering school usage.	Improve pitch quality through an increase in maintenance investment and maximise use. Potential site for FA Pitch Improvement Programme.	Council FA	Key centre (medium)	M	L	Protect Enhance	No change. Discussions to be held with all education facilities as part of forthcoming workshop / stakeholder group. The aim being to open up as educational facilities for community use where possible and to identify opportunities to improve the quality of pitches and associated facilities.
		Rugby union		Three poor quality senior pitches not made available for community use in order to protect surface quality for school use and occasional Saturday morning fixtures.	Improve quality and retain for school use.	Council RFU		M	L-M		
		AGP		Standard quality sand dressed pitch with floodlighting in need of surface replacement. West Bromwich Albion FC hires the pitch and has exclusive access on Mondays and Wednesdays for its academy teams, which leaves little capacity otherwise. Also used by Gloucester City HC as an alternate venue.	Improve pitch quality. England Hockey to identify priority for this AGP to be retained as sand for hockey use. If to be retained as sand surface ensure hockey can be accommodated as a priority. Decision to be reached by FA and EH in the context of Citywide Strategy for 3G pitches.	Council FA EH		S	L		
		Tennis		Two areas with two and five poor quality tarmac courts respectively, regularly used as playground areas. Used by St Peter's Junior TC which reports unmet demand and a lack of access to good quality surfaces.	Determine potential to resurface courts and to increase community use and enable club growth. Support the school in search of funding opportunities if required.	Council LTA		S-M	M		
56	The Lannett	Football	Council	One senior and one mini rugby union pitch both of poor quality. Currently unused since previous club Tredworth RFC folded. Council has plans to mark as football pitches for Tuffley Rovers FC for 2015/16 season.	No current local demand for rugby pitch. Improve quality and retain as football pitch going forward to meet demand identified. Re-evaluate potential as a dual sport site reinstating a rugby union pitch should a club register interest.	Council FA	Local (low)	S	L	Protect Enhance	Tuffley Rovers FC Youth now have two, well established, 11 aside football pitches marked out on The Lannett. Both pitches were used in the 2015/16 season and the plan is to use them again this season. Seasonal tenancy for pitches agreed, with licence in place for use of the pavilion/changing rooms but work needed to bring pavilion/changing rooms up to a decent standard. Tuffley Rovers FC are seeking funding to improve the pavilion/changing rooms with support from the FA and City Council who are looking into increasing security of tenure.
57	The Oaks	Football	Council	Two poor quality mini 7v7 pitches used by Abbeymead Rovers FC U9s. No capacity for further use at peak time.	Seek to make improvements to maintenance in order to better pitch quality, both for use and to increase capacity future capacity.	Council FA	Local (medium)	M	L	Protect Enhance	No change.
59	Tuffley	Football	Council	Two adult, one youth 9v9 and one mini	Maximise usage to address shortfalls	Council	Key centre	M	L	Protect	No change.

GLOUCESTER PLAYING PITCH STRATEGY

	Park			7v7 pitch, all assessed as standard quality. Well used, mainly by Gloucester City Ladies FC junior section. Available capacity of 1.5 adult match sessions and each on 7v7 and 9v9 pitches.	whilst seeking to increase pitch quality through improved maintenance in order to further add to potential capacity.	FA	(medium)			Enhance	
		Cricket		Two standard quality squares, each with 12 wickets. Used mainly by Gloucester City Winget CC as a secondary site as well as some midweek play. Spare site capacity for an additional 90 matches per season.	Determine the requirement for two pitches onsite given demand in the area and current level of available capacity. Maximise use of available capacity through development of cricket and increase in demand.	Council ECB		S	L		
		Bowls		Good quality green used by Winget BC. Membership of circa 33 and therefore capacity for additional play. The ancillary facilities are rated as unacceptable and as such the Club is exploring funding options for a new clubhouse.	Support the Club in ensuring it retains the required knowledge base and resources including equipment to continue to maintain the green to the same standard. Support the Club, where possible, to apply for funding for a new/improved clubhouse.	Council Club		L	L		
60	University Of Gloucestershire (Oxstalls Campus)	AGP	University	Standard quality sand filled pitch with floodlighting. Owned by University of Gloucestershire. In excess of 10 years old and therefore requires resurfacing. Mainly used by student teams for training and BUCS hockey matches on Wednesday afternoons with no further capacity available. Plans for this pitch to be lost within current plans for development of the site to accommodate the University's Business School.	If this AGP is lost this will reduce provision in the City to three sand AGPs suitable for hockey. This will also create displacement of hockey teams which will need to be re accommodated. Loss of the pitch and displacement of teams would need to be fully mitigated by an improvement in pitch quality elsewhere and secured hockey access at an alternative site.	Council University FA EH RFU	Key centre (high)	S-M	H	-	Significant change as a result of the University of Gloucestershire's successful planning application to provide a new business school and enhanced sporting facilities. Reserved matters planning applications now being submitted. Outline planning permission includes 2 x new 3G pitches, sports hall and improved quality to grass pitches on this site and on the adjacent Plock Court.
61	Walls Sports And Social Club	Football	Sports Club	Two standard quality adult pitches, one overmarked by a youth 9v9 pitch and the other by mini 7v7 and 5v5 pitches. Used by several clubs, mainly Gloucester City FC junior section. Each pitch is overplayed by 0.5 match sessions per week due to intensified play from overmarked pitches.	Investigate potential to transfer some play to alternative pitches in order to reduce overplay. Also seek to better pitch quality through improved maintenance in order to help alleviate the level of overplay.	Sports Club FA	Local (low)	M	L	Protect Enhance	No change.
62	Waterwells Sports Centre	Football	Parish Council	Two adult pitches, one youth 9v9 and one youth 7v7, all of which are poor quality and overplayed. The pitches drain poorly and the Club requires relevant equipment to spike the surface. Club aspiration for floodlighting.	Improve pitch quality/maintenance and link to establishing an equipment bank. In the longer term explore funding options for floodlighting when the Club gains promotion to a Step 6 league.	Parish Council Club FA	Local (medium)	S-M	M	Protect Enhance	FA / Quedgeley Wanderers funded grass pitch improvements being undertaken. The club has now also purchased pitch maintenance machinery and undertaken maintenance in-house.
		AGP		Small sized sand filled pitch operated by Quedgeley Parish Council. Used by Quedgeley Wanderers FC for training.	Ensure sufficient access for club training and existing unmet demand should further teams be created. Maximise commercial use from small sided social football use and other community groups.	Parish Council Club FA		L	L		
65	Kingsholm Square Lawn Tennis	Tennis	Sports Club	Two standard quality grass courts cut and marked by the Club which is limited to local community use.	Support the Club as required to improve court quality.	Club LTA	Local (low)	L	L-M	Protect Enhance	No change.

GLOUCESTER PLAYING PITCH STRATEGY

66	Gloucester Wotton Lawn Tennis Club	Tennis	Sports Club	Two grass and three tarmac courts all of standard quality, none of which are floodlit. The Club reports demand for a further two hard courts because the lack of floodlighting greatly affects ability to host home fixtures at the beginning of the season.	Explore opportunities for access to additional courts and/or potential to install floodlighting in order to increase winter court capacity.	LTA Club	Local (medium)	S-M	M	Protect Provide	No change.
69	EDF Energy	Bowls	Private	One good quality green owned and operated by the industry sports club. Not available for community use.	Continue to sustain green quality to accommodate current membership through required maintenance procedures	Industry	Local (low)	L	L	Protect	No change.
		Tennis		Two standard quality tarmac courts without floodlighting. Private industry sports club and therefore unavailable for wider community use.	Continue to maintain court quality and provide sporting provision for industry employees.	Industry LTA		L	L		
71	Abbeymead Primary School	Football	Council	Two youth 9v9 and two mini 5v5 pitches, all of which are standard quality. Used by Abbeymead Rovers FC junior section. 1.5 match sessions available for youth 9v9 at peak time, with a further 0.5 sessions available for mini 5v5.	Retain spare capacity in order to help sustain/improve pitch quality.	Council FA	Local (low)	L	L	Protect	No change.
72	Longlevens Infant School	Football	Council	Youth 9v9, mini 7v7 and mini 5v5 pitches all assessed as standard quality. Used by Longlevens Infants FC. All show spare capacity but only one match session for youth 9v9 play is available at peak time.	Retain spare capacity in order to help sustain/improve pitch quality.	Council FA	Local (low)	L	L	Protect	No change.
73	The Oval	Tennis	Council	Four poor quality tarmac courts without floodlighting. No recorded community use though it is likely that these courts are used infrequently for non-organised tennis.	Seek to improve court quality and ensure access for continued irregular use by local residents.	Council LTA	Local (medium)	M-L	M	Protect Enhance	No change.
74	Kingsway Sports Field (Hardwicke & Quedgeley Harlequins RFC)	Football	Council	Poor quality adult football pitch currently unused and therefore available at peak time.	Improve quality and maximise use. Alternatively if low value site re provide pitches/investment in capacity at a hub site and retain as a reserve site.	Council FA	Key centre (medium)	S	L-M	Protect Enhance Provide	GCC funded improvements to rugby pitch, two football pitches and the cricket outfield. To include 'verti draining', application of selective herbicide, application of fertiliser and over-seeding to two football pitches, one rugby pitch and one cricket outfield. GCB now actively working with the club to increase in participation.
		Cricket		Standard quality square with 10 wickets, used by Hardwicke & Quedgeley CC. Available capacity for a further 29 matches per season.	Improve quality and maximise use to accommodate future demand.	Council ECB		M	M		
		Rugby union		Poor quality senior pitch used by Hardwicke & Quedgeley Harlequins for matches. Spare capacity of 0.5 match sessions available at senior peak time, or one match session at junior peak time.	In the short term retain spare capacity in order to sustain quality and in the longer term improve pitch quality/maintenance and maximise use.	Council RFU		S-M	L-M		
76	Innsworth Lane Sports Ground	Football	Sports Club	Site previously damaged by flooding and at the time of assessment was unused. However, has recently become operational again by Longlevens FC junior section. Changing facilities have since been restored, with room to mark youth 9v9 pitch upon further pitch remedial work.	Support the Club in sustaining quality through required standard of maintenance.	Council FA Club	Local (medium)	M	M	Provide	Ongoing GCC funded football pitch improvements with verti draining, application of a selective herbicide, seeding plus the installation of a 'french' drain.
N/A	Gloucester Civil Service	Football Cricket Rugby union	Private	Multi sport site previously managed by the Civil Service Sports Council (CSSC), sold to Redrow Homes in 2010 and left to	Should planning permission be submitted for change of use seek like for like mitigation for loss of sports facilities.	Council FA ECB	-	L	H	Provide	Planning application now submitted for the redevelopment of the site for residential

**GLOUCESTER
PLAYING PITCH STRATEGY**

	Club	Bowls Tennis		become disused.		RFU LTA					development. Sports last played more than five years ago. Offer of financial contribution to provide new / improve facilities off-site – Oxstalls identified as the recipient by the applicants. Application not yet determined.
--	------	-----------------	--	-----------------	--	------------	--	--	--	--	--

GLOUCESTER PLAYING PITCH STRATEGY
