



KEY

- 1 COMMUNITY CENTRE
- 2 NEW ADVENTURE PLAYGROUND
- 3 ALLOTMENTS
- 4 MAINLINE RAILWAY
- 5 PARKING AREA

- VEHICULAR PAVING
- PEDESTRIAN PAVING
- SOFT LANDSCAPING

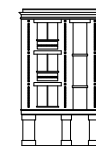
C.A.D. INFORMATION

C.A.D. DRAWING NAME STROUD/Gloucester/White City Community Centre		DRAWN BY PH	
PLOTTED FOR PLANNING	PLOT DATE	CHECKED PH	

REVISIONS

T 13.10.20 PH GENERAL UPDATE	V 15.06.21 PH CLIMBING EQUIPMENT REMOVED	X 16.07.21 PH ZIP WIRE MOVED
U 21.10.20 PH GENERAL UPDATE	W 28.06.21 PH EXISTING PATHWAY REINSTATED	

e: mail@potterandholmes.com www.potterandholmes.com



POTTER CHURCH & HOLMES · ARCHITECTS

SITE PLAN AS PROPOSED		WHITE CITY COMMUNITY CENTRE NORTHFIELD RD, GLOUCESTER, GL4 6TX		
SCALE 1:500@A3	DATE 16.11.17	DWG.No P01	REV X	
KNOWLE COTTAGE, CRANHAM, GLOS. GL4 8JA		TEL: 01452-526330		